

# harriet AND alice



## Ice Mountain Socks

Created by Kate Bispala

### Materials:

Yarn: 1 skein of Lavender Lune Sock 80/20 and 1 mini in CC

Needles: US 1 DPN

Stitch Markers and Tapestry Needle

### Gauge:

32 sts. and 46 rows per 4"

### Directions:

Socks worked top down, make 2

### Picot Cuff:

- With MC Cast on 64 (72) sts
  - Rnds 1-5 Join in the round and Knit all 5 rounds
6. \*YO, K2tog\* repeat between \* \*
7. Knit all sts including YO
- 8-11: Knit

### Connect Picot Edge:

- Fold CO edge with wrong sides facing
- Connect CO sts together with live sts on needle by knitting them together

### Leg:

Rnds 1-5: Knit

Before working Chart divide sts on 3 needles:

- Needle 1 = 16 (20) sts
- Needle 2 = 32 (32) sts
- Needle 3 = 16 (20) sts

### Pattern/Chart: 32 rounds

Knit across needle 1, work chart on needle 2, knit across needle 3

- Sock should measure 3.5" at this point
- Once chart is complete continue knitting all rounds until sock measures 5" or desired length

\*For Size 2 adjust sts on needles to be 18, 26, 18

### Heel Flap:

1. K16 (18), join CC, K2, \*Sl1, K1\*, repeat between \* \* on needle 2
  2. Turn work. Sl1, purl 31(35)
  3. Turn work. Sl1, K1 across needle 2
- Repeat rows 2 & 3 16 (18) times total



## Heel Turn:

1. Sl1 P16 (18), P2tog, P1, turn
2. Sl1, K3, SSK, K1, turn
3. Sl1, P4, P2tog, P1, turn
4. Sl1, K5, SSK, K1, turn

\*Repeat this pattern (purling or knitting the gap sts. together) until all sts. on needle are worked 18 (20) sts will remain. Cut CC Color

## Gusset:

With MC Pick up and K 16 (18) sts. along left side of heel flap, K18 (20) sts. PM, Pick up and knit 16 (18) sts along right side of heel, K32 (36) across top of foot.

1. K1, SSK, K to 3 sts before marker, K2tog, K1, K32
  2. Knit
- Repeat rounds 1 & 2 until 64 (72) sts. remain

## Instep/Foot:

Knit in the round until foot measures 1.5" less than desired length

## Toe:

With CC, K one round

1. [K1, SSK, K26 (30), K2tog, K1] repeat
  2. Knit
- Repeat 1 & 2 until 28 (32) sts. remain

## Finishing:

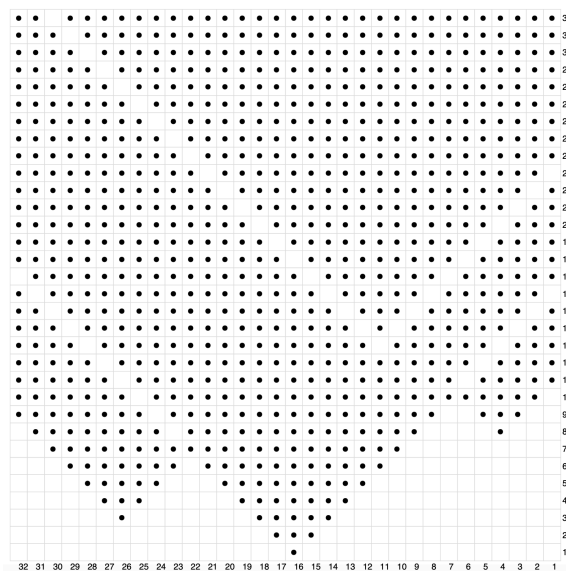
Using the Kitchener Stitch graft remaining stitches together

Weave in ends

## Optional Mountain Outline:

- Using CC and using an outline stitch follow the edges of the mountains to highlight the purl sts. (approx 1.5 yds needed per sock)

## Pattern Chart: Larger version on our website



- Knit
- Purl
- Yarn over
- Slip, slip, knit
- Knit 2 together
- No stitch

## Terms:

CO: Cast On

K: Knit

P: Purl

MC: Main Color

CC: Contrasting Color

Sl: Slip st Purlwise with yarn in back

K2tog: Knit 2 sts together

YO: Yarn Over

SSK: Slip, Slip, Knit the 2 slipped stitch together

M: Marker (I use a locking stitch marker on work with DPNs as a visual guide)

PM: Place Marker

